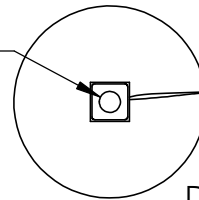


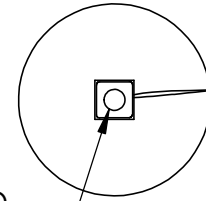
**Notes:**

- 1) All dimensions in inches.
- 2) Painted gray post fabrication.

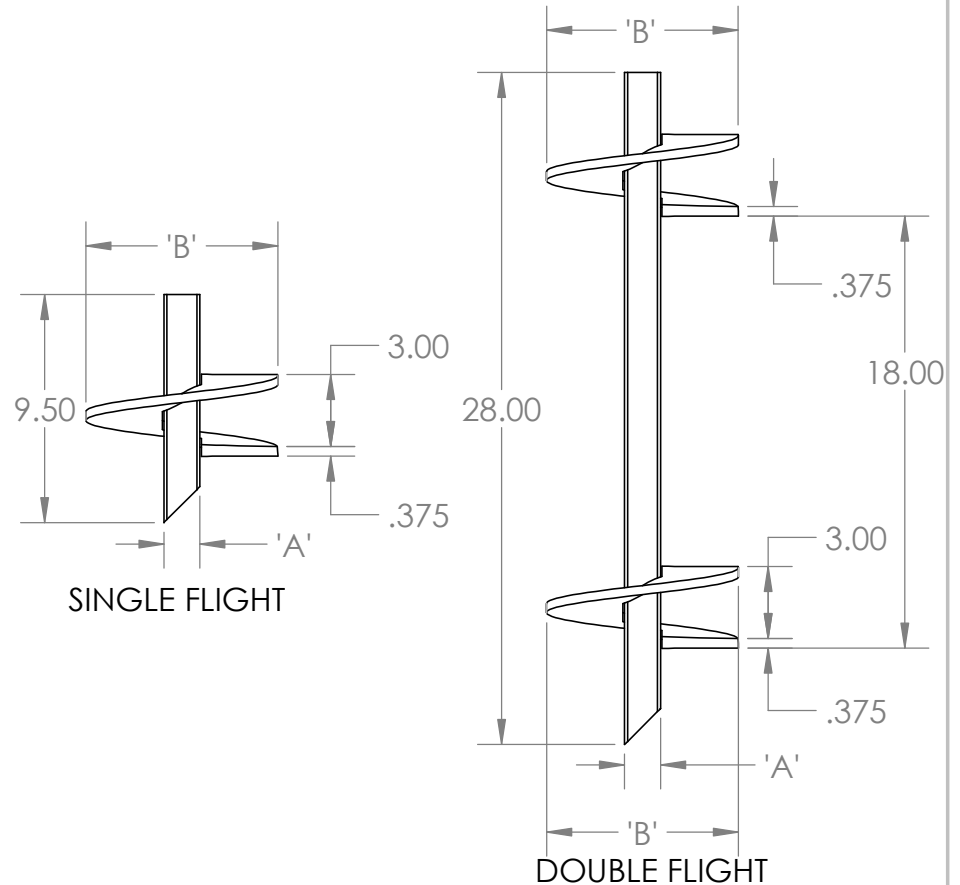
DRILLED & TAPPED  
FOR USE WITH 'C' SIZED  
POWER-GRIP ANCHOR ROD



DRILLED & TAPPED  
FOR USE WITH 'C' SIZED  
POWER-GRIP ANCHOR ROD



PART NUMBER	'A'	'B'	'C'	WEIGHT (LBS)	TORQUE RATING (FT-LB)
G82-6	1-3/8"	8"	5/8"	10.5	6,000
G102-6	1-3/8"	10"	5/8"	13.5	6,000
G112-6	1-3/8"	12"	5/8"	17	6,000
G84-6	1-3/8"	8"	3/4" OR 1"	10.5	6,000
G104-6	1-3/8"	10"	3/4" OR 1"	13.5	6,000
G114-6	1-3/8"	12"	3/4" OR 1"	17	6,000
G134-6	1-3/8"	14"	3/4" OR 1"	21.5	6,000
G84-2-6	1-3/8"	8"	3/4" OR 1"	26.5	6,000
G104-2-6	1-3/8"	10"	3/4" OR 1"	32.5	6,000



**Unless otherwise noted:**

All dimensions are in inches

Degrees: +/- 5.0

0 place decimal: +/- 0.1

1 place decimal: +/- 0.01

2 place decimal: +/- 0.03

<b>B</b>	<b>9/7/2023</b>	<b>114</b>
<b>A</b>	<b>1/25/2023</b>	<b>-</b>
<b>REV</b>	<b>REV DATE</b>	<b>ECR #</b>



**MATERIAL:** 1-3/8" ROUND CORNERED SQUARE  
STEEL BAR PER ASTM A29/A29M-16 &  
3/8" STEEL PLATE PER ASTM A1018

1.375" POWER-GRIP  
HUB ANCHOR

**P/N:** 1.375" POWER-GRIP HUB ANCHOR - DATASHEET

**WEIGHT:**SEE TABLE

**Date:**1/25/2023

**DRAWN BY:** JM

**Rev:**B