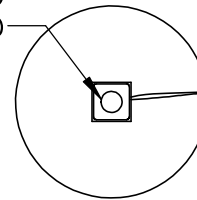


Notes:

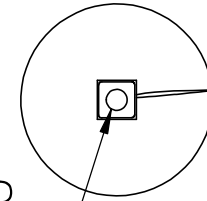
1) All dimensions in inches.

2) Painted gray post fabrication.

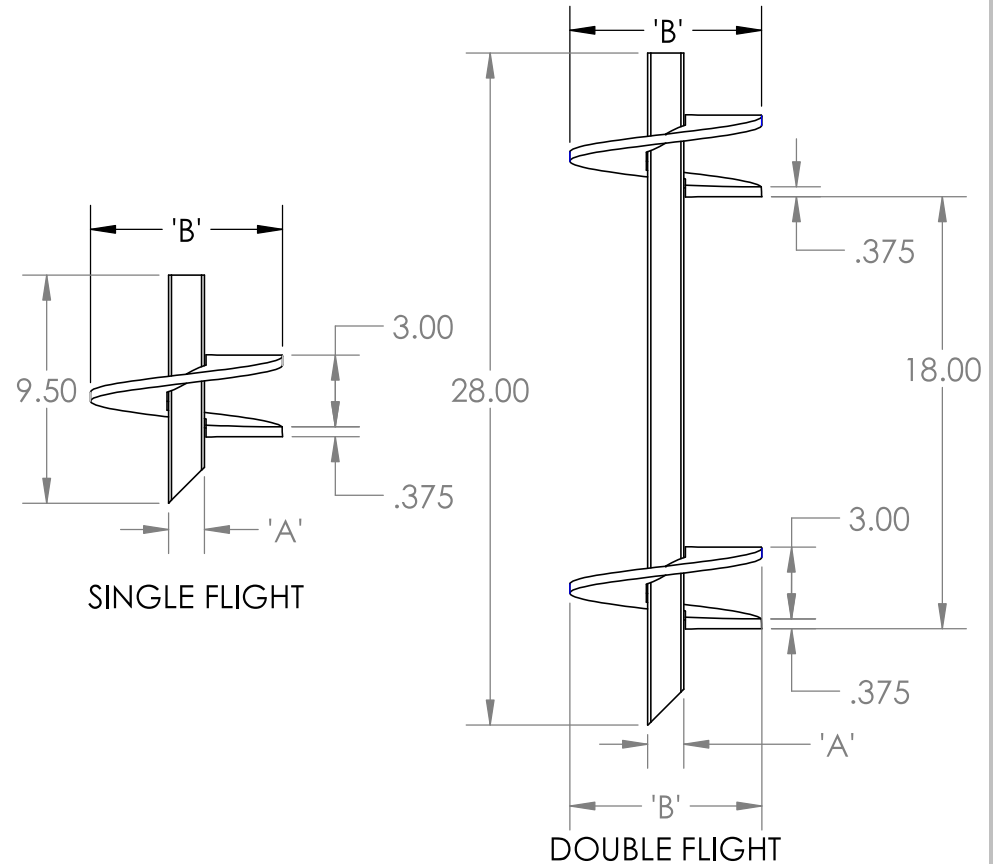
DRILLED & TAPPED
FOR USE WITH 'C' SIZED
POWER-GRIP ANCHOR ROD



DRILLED & TAPPED
FOR USE WITH 'C' SIZED
POWER-GRIP ANCHOR ROD



PART NUMBER	'A'	'B'	'C'	WEIGHT (LBS)	TORQUE RATING (FT-LB)
G182-7	1-1/2"	8"	5/8"	11	7,000
G1102-7	1-1/2"	10"	5/8"	14	7,000
G1112-7	1-1/2"	12"	5/8"	17.5	7,000
G184-7	1-1/2"	8"	3/4" OR 1"	11	7,000
G1104-7	1-1/2"	10"	3/4" OR 1"	14	7,000
G1114-7	1-1/2"	12"	3/4" OR 1"	17.5	7,000
G1134-7	1-1/2"	14"	3/4" OR 1"	22	7,000
G284-7	1-1/2"	8"	3/4" OR 1"	28	7,000
G2104-7	1-1/2"	10"	3/4" OR 1"	34	7,000



Unless otherwise noted:

All dimensions are in inches

Degrees: +/- 5.0

0 place decimal: +/- 0.1

1 place decimal: +/- 0.01

2 place decimal: +/- 0.03

B	9/7/2023	114
A	1/25/203	-
REV	REV DATE	ECR #



MATERIAL: 1-1/2" ROUND CORNERED SQUARE
STEEL BAR PER ASTM A29/A29M-16 &
3/8" STEEL PLATE PER ASTM A1018

1.5" POWER-GRIP HUB ANCHOR

P/N: 1.5" POWER-GRIP HUB ANCHOR - DATASHEET

WEIGHT:SEE TABLE

Date:1/25/2023

DRAWN BY: JM

Rev:B