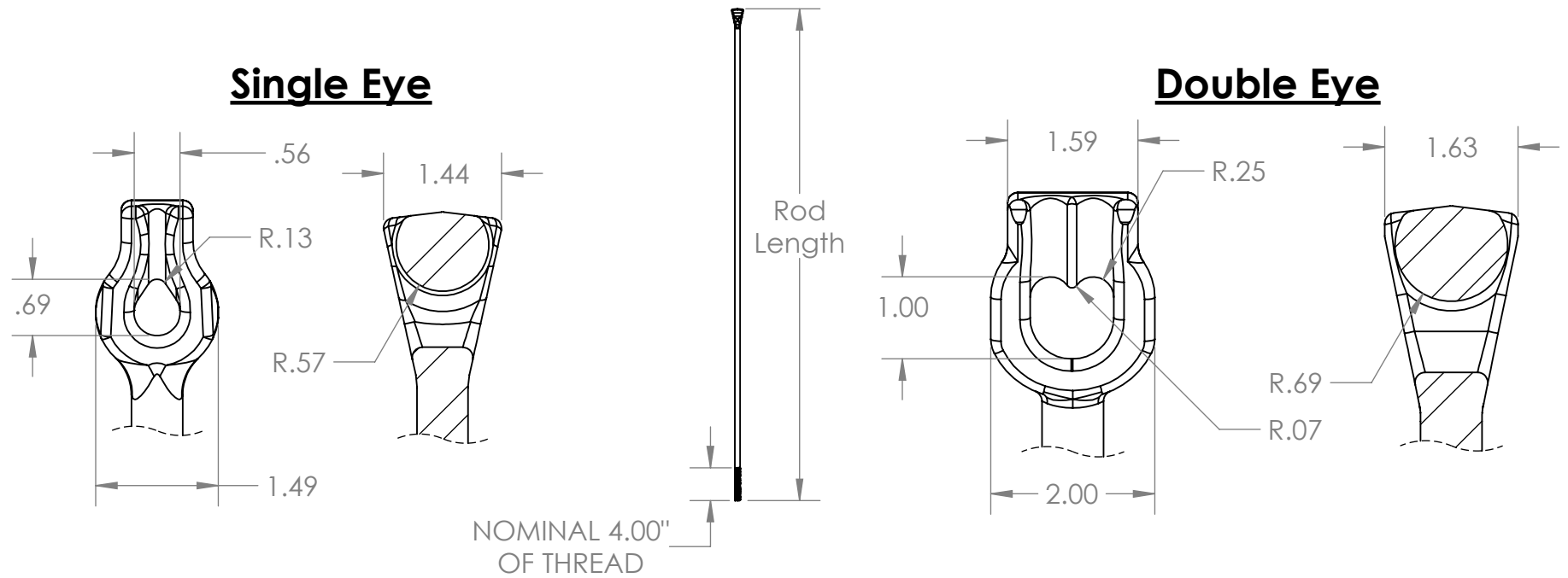


Notes:

- 1) All dimensions in inches.
- 2) Hot dip Galvanized per ASTM A123



| Part Number | EYE TYPE | NOMINAL ROD DIAMETER | ROD LENGTH (IN) | WEIGHT (LBS) | TENSION RATING (LBS) |
|-------------|------------|----------------------|-----------------|--------------|----------------------|
| G7415 | SINGLE EYE | 5/8 | 60 | 5.4 | 16,000 |
| G7516 | DOUBLE EYE | 5/8 | 60 | 6.5 | 16,000 |
| G7517 | DOUBLE EYE | 5/8 | 84 | 8 | 16,000 |
| G7518 | DOUBLE EYE | 5/8 | 96 | 8.4 | 16,000 |
| G7428 | SINGLE EYE | 3/4 | 96 | 12.5 | 23,000 |
| G7527 | DOUBLE EYE | 3/4 | 84 | 11 | 23,000 |

| | | | | | |
|--|------------|------------------|--------------|---|-------------------------------------|
| <p>Unless otherwise noted: All dimensions are in inches Degrees: +/- 5.0 0 place decimal: +/- 0.1 1 place decimal: +/- 0.03 2 place decimal: +/- 0.005</p> | | | | <p>MATERIAL: SAE J403 Grade 1010</p> | <p>FORGED ANCHOR ROD DATA SHEET</p> |
| | | | | | |
| | A | 1/26/2024 | - | <p>P/N: FORGED ANCHOR ROD DATA SHEET</p> | |
| | REV | REV DATE | ECR # | <p>WEIGHT: SEE TABLE</p> | <p>Date: 1/26/2024</p> |
| | | | | <p>DRAWN BY: DC</p> | <p>Rev: A</p> |

