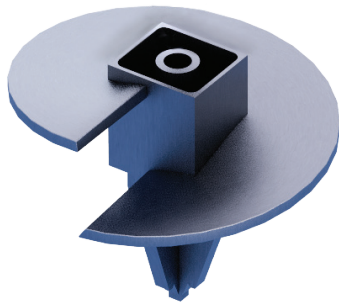


## WHO WE ARE

For over a century, Grip-Tite<sup>®</sup> Manufacturing in Winterset, Iowa, has been a leader in producing high-quality earth anchors. Made from premium American steel, our anchors meet RUS standards and are Buy America certified, ensuring top quality for the utility industry.



Heavy Duty Hub Anchors

Power-Grip Heavy Duty Hub Anchors are higher torque rated hub anchors used primarily in higher capacity applications. Available in Heavy Duty are, 2-1/2" and 2-1/4", with 4 flight sizes (8", 10", 12" and 14"). Power-Grip Heavy Duty Hub Anchors are made from structural steel tubing and sheet steel with the 3/8" steel flights formed to a 3" pitch for consistent penetration. Used in combination with Power-Grip Hub Anchor Rods and Eye-Nuts. Power-Grip Heavy Duty Anchors come painted for rust resistance.



Super Heavy Duty Hub Anchors

Power-Grip Super Heavy Duty Hub Anchors are higher torque rated hub anchors used primarily in higher capacity applications. Available in Super Heavy Duty are, 2-1/2" and 2-1/4", with 4 flight sizes (8", 10", 12" and 14"). Power-Grip Super Heavy Duty Hub Anchors are made from structural steel tubing and sheet steel with the 1/2" steel flights formed to a 3" pitch for consistent penetration. Used in combination with Power-Grip Hub Anchor Rods and Eye-Nuts. Power-Grip Heavy Duty Anchors come painted for rust resistance.

**Power-Grip**

# CHOOSE GRIP-TITE

It's not about what, it's about how...

There's no magic in utility anchors, these products have remained largely unchanged for decades. The magic lies in how they are produced and delivered to our customers. We're different. We provide all the quality and support of a large manufacturer with the service and feel of a family-owned Midwest business. Our personal values are our company values, and we treat our customers like family.



Hub Anchors Rods

Power-Grip Hub Anchor Rods are steel rods that utilize two forged and threaded ends to connect Power-Grip Hub Anchors (1-3/8", 1-1/2", HD, and SHD) to the surface. Available in 2 lengths (3-1/2' and 7') and 3 different nominal rod sizes (5/8", 3/4", and 1"). Power-Grip Hub Anchor rods are used in combination with Power-Grip Hub Anchors, Power-Grip Heavy Duty Hub Anchors, Power-Grip Super Heavy Duty Hub Anchors, and Eye-Nuts and are galvanized to ASTM A123 standards. Note the thread size of the Power-Grip Hub Anchor Rod must match the thread size in the mating Power-Grip Hub Anchor.

## WHY WE ARE DIFFERENT

- ✔ Customer service excellence
- ✔ Made in America (Winterset, Iowa)
- ✔ Made with American Steel
- ✔ Shorter lead times than our competition
- ✔ We have been manufacturing anchors for over 100 years
- ✔ Grip-Tite anchors have been installed by utilities for over 20 years through MacLean Power Systems

***We make them differently.***



**DOWNLOAD OUR  
PRODUCT GUIDE**