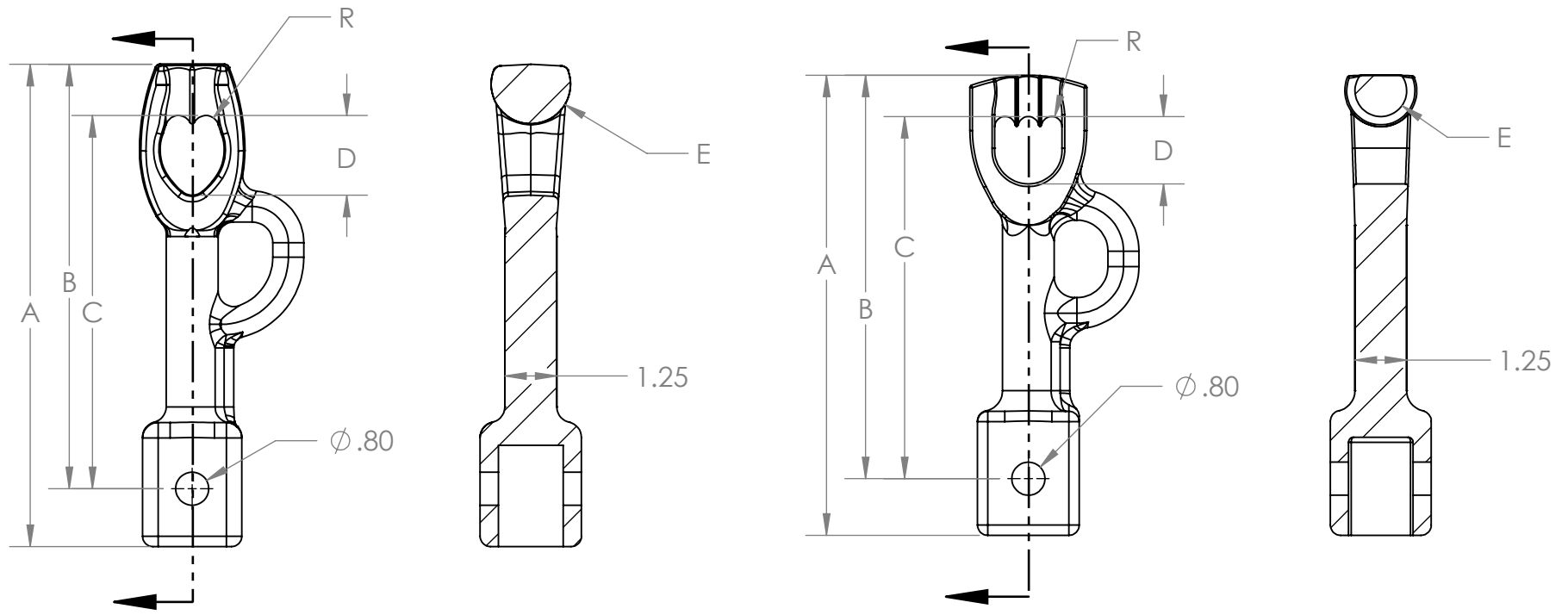


Notes:

- 1) All dimensions in inches.
- 2) Hot Dip Galvanized PER ASTM A123



PART NUMBER	'A'	'B'	'C'	'D'	'E'	'R'	WEIGHT (LBS)
G6604	11	9 5/8	8 1/2	1 1/2	1	5/8	8
G6606	11	9 3/4	8 5/8	1 5/8	5/8	1/4	8

MATERIAL: CAST STEEL



REV	REV DATE	ECR #

P/N: Square Shaft Termination

Date: 1/30/2024

DRAWN BY: DC

Rev:A